

DENON®

DHT-S218

Dolby Atmos Sound Bar

Quick Start Guide

Before you begin

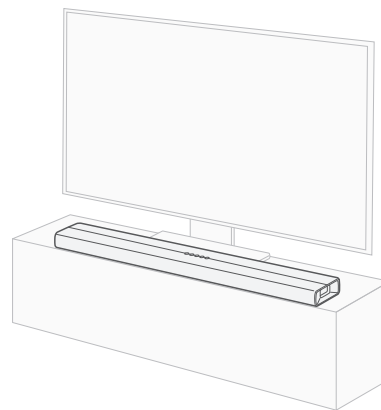
What's in the box

- Sound bar
- Quick Start Guide
- Safety instructions
- Power cord
- HDMI cable (4K)
- Remote control (RC-1251)
- 2× R03/AAA batteries

1

Place the sound bar

For the best listening experience, place the sound bar centered under your TV and flush with the front edge of your cabinet.



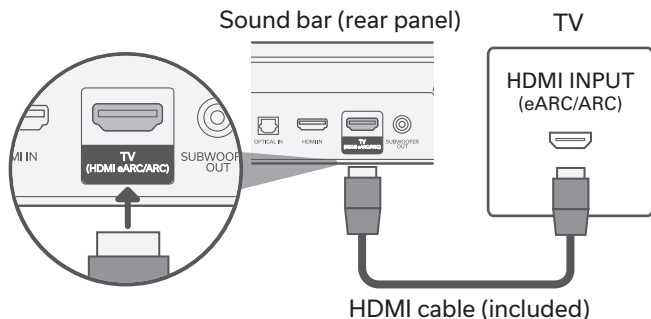
- The sound bar can also be wall-mounted using the mounting template printed on the bottom of the box. Scan the QR code for wall mounting instructions or consult with your local Denon dealer or professional installer.



2

Connect the sound bar to your TV

- 1 Plug one end of the HDMI cable into the eARC/ARC port on your TV.
- 2 Plug the other end of the HDMI cable into the eARC/ARC port on the sound bar.



IMPORTANT

- Look carefully for the HDMI port on your TV labeled "eARC" or "ARC".
- Most TVs have only one HDMI port labeled "ARC" or "eARC". You must connect to that specific port or else the sound bar will not play TV audio.

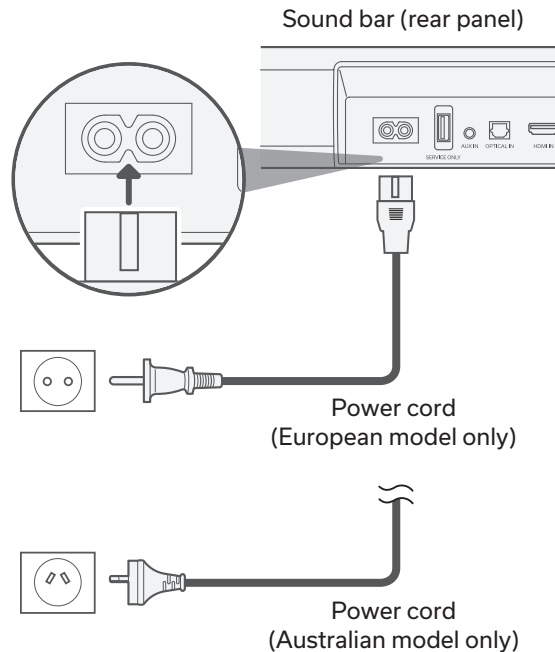


- If the TV does not have an HDMI port labeled "eARC" or "ARC", connect the sound bar to the TV using the optical cable. Please note that an optical connection does not support Dolby Atmos®.

3

Connect the power cord to a wall outlet

Connect the included power cord to the sound bar, and insert the plug into an outlet.



EN

DE

FR

IT

ES

NL

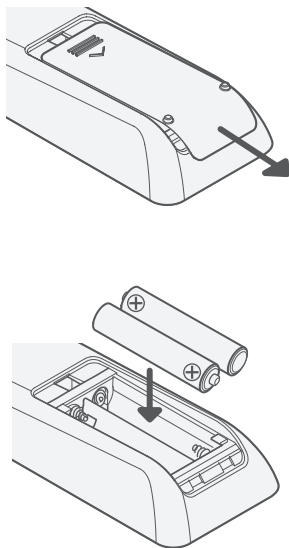
SV

RU

PL

4 Install batteries in the remote control

Slide off the cover on the back of the remote control and insert the batteries in the proper orientation.



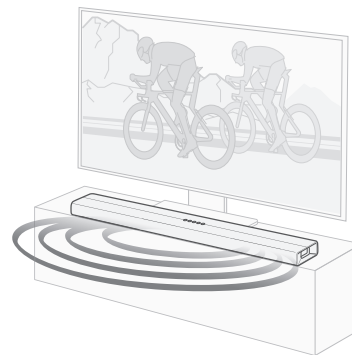
- Batteries can be taken out in reversed order.

5 Setup is now complete!

Turn on your TV and verify that you hear sound playing from the sound bar.



- If you don't hear sound from the sound bar or you hear an echo, make sure to check the following in the TV settings menu: 1) CEC and/or ARC is enabled and 2) TV speakers are switched off




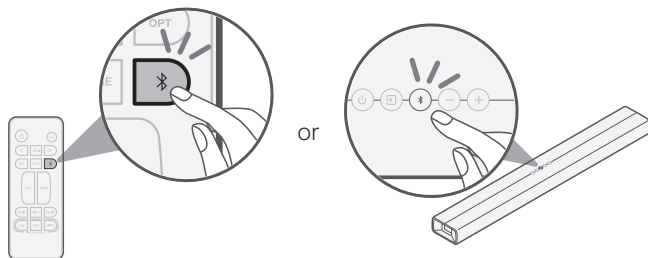
Owner's manual

- Refer to the online manual for other functions, information and operation procedure details.
manuals.denon.com/DHTS218/EU/EN/
- For more information, visit www.denon.com

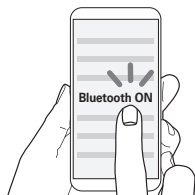


Streaming music via Bluetooth®

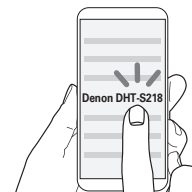
- ① Press the  (Bluetooth) button on the sound bar (or remote control) to switch the input source to "Bluetooth". When you use it for the first time, the sound bar automatically enters pairing mode and the Bluetooth light blinks blue.



- ② Go to the Bluetooth settings on your device, and make sure Bluetooth is turned ON.

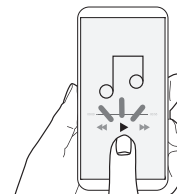



- ③ Select "Denon DHT-S218". The Bluetooth light on the sound bar turns solid blue when pairing is complete.



- This unit supports Bluetooth LE Audio. To listen to Bluetooth LE Audio, select "LE-Denon DHT-S218" while using a device that supports Bluetooth LE Audio.

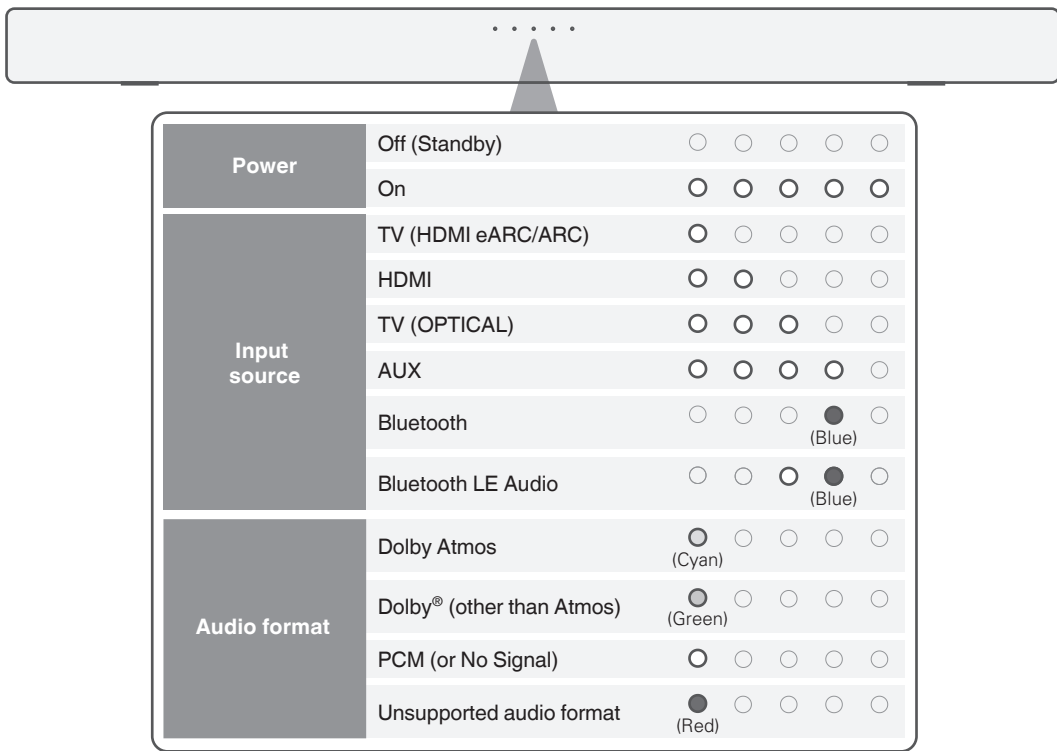
- ④ Play music using any app on your Bluetooth device.



- To pair with other Bluetooth devices, press and hold the  button until the Bluetooth light blinks blue. The sound bar enters pairing mode.

About the status lights

The sound bar lights indicate the power state, input source, audio format and other status information.



Trademark information

 **Dolby Atmos**

COMPATIBLE WITH

 **Dolby Vision**

Dolby, Dolby Vision, Dolby Atmos, and the double-D symbol are registered trademarks of Dolby Laboratories Licensing Corporation. Manufactured under license from Dolby Laboratories. Confidential unpublished works. Copyright © 2012–2022 Dolby Laboratories. All rights reserved.

**HDMI**[™]
HIGH-DEFINITION MULTIMEDIA INTERFACE

The terms HDMI, HDMI High-Definition Multimedia Interface, HDMI trade dress and the HDMI Logos are trademarks or registered trademarks of HDMI Licensing Administrator, Inc.

 **Bluetooth**[®]

The Bluetooth[®] word mark and logos are registered trademarks owned by the Bluetooth SIG, Inc. and any use of such marks by DEI Sales, Inc. is under license. Other trademarks and trade names are those of their respective owners.

DENON[®]

www.denon.com

Printed in China 5411 12084 00AS
© 2024 Masimo. All Rights Reserved.